

Northeast-A4 Laurel Highlands (#527)
Pittsburgh, PA
2014-01-16

Current Year-to-Date: 1625 of 2900
Last Year-to-Date: 1450 of 2500

Composite Score (2900 max)



Overall status

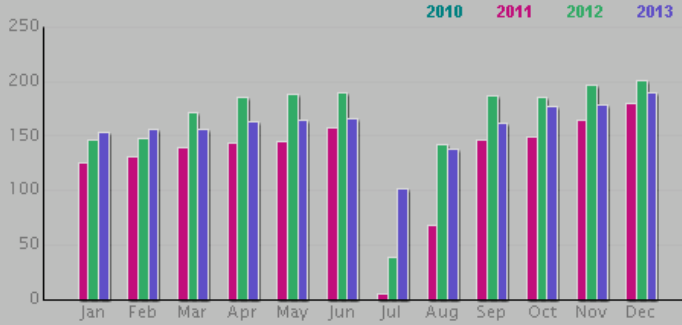


Fiscal Management	Fundraising
Endowment	Market Share 3.74%
Membership Growth 1.12%	Youth Retention .03%
Cub Scout Advancement 1.04%	Boy Scout Advancement 1.25%
Cub Scout Camping -24.37%	Boy Scout Camping 4.86%
Community Service 0.3 hrs	Youth-Serving Executives -2
Commissioner Service -5.97%	Unit Visitations 0.98%
Voice of the Scout 7.25%	Council Leadership
District Leadership -3.3	Unit Leadership 1.58%

UNIT SERVICE: Commissioner Service

Performance Standard

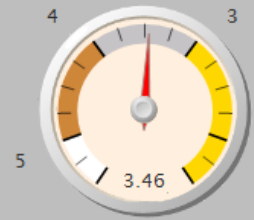
Total Unit Commissioners



-5.97%

Determined Standard

Units to Unit Commissioner Ratio:



3.47

Council Score: SILVER = 50 points

Great work, this council has been awarded silver for its ability to maintain or increase the ratio of unit commissioners to units.

The calculation

The measurement for the determined standard is the number of total traditional units divided by the number of registered unit commissioners (Position Code 80). The performance standard compares the number of unit commissioners in the current year to the number for the same month last year. In 2011, the final score is determined from the higher level of achievement from either the determined standard or performance standard. In 2012 and beyond, the score is determined by a combination of the standards.

Level	Determined standard	Performance standard
Gold	CTU ratio of 1:3	Ratio of 1:4 and 5% increase in unit commissioners
Silver	CTU ratio of 1:4	Ratio of 1:5 and 5% increase in unit commissioners
Bronze	CTU ratio of 1:5	5% increase in unit commissioners

Additional detail

Every person registered in an "80" position code is counted, even if that person holds a multiple registration. Data feeds for this criterion occur on the 8th of each month.

Gold Performers: Achievers within only the Determined Standard gold range

- Lewis and Clark
- Texas Trails Council
- Alameda Council BSA
- Daniel Boone Council
- Atlanta Area Council
- Capitol Area Council
- Baltimore Area Council
- Baden-Powell Council
- Ore-Ida Council 106 - BSA
- Moraine Trails Council
- Ventura County Council
- Patriots Path Council
- Hawkeye Area Council
- Coastal Carolina Council
- Pushmataha Area Council
- Circle Ten Council
- Great Lakes FSC
- Yucca Council
- Mount Baker Council, BSA
- Denver Area Council
- Pee Dee Area Council
- Anthony Wayne Area
- Pacific Skyline Council
- Mountaineer Area
- Tuscarora Council
- Montana Council
- Westmoreland Fayette
- Allegheny Highlands Council
- Mason Dixon Council
- Sam Houston Area Council
- Longhorn Council
- Sequoia Council
- Northeast Georgia Council
- Heart of America Council
- Rip Van Winkle Council
- Santa Fe Trail Council
- Great Smoky Mountain Council
- Quapaw Area Council
- Lincoln Heritage Council
- Greenwich
- Twin Valley
- Suffolk County Council Inc
- South Florida Council
- Flint River Council
- Louisiana Purchase Council
- Tukabatchee Area Council
- Northeastern Pennsylvania Council
- West Tennessee Area Council
- Middle Tennessee Council
- Southeast Louisiana Council
- Hudson Valley Council
- East Carolina Council
- Mid-America Council
- Central Florida Council
- Allohak
- Central Georgia Council
- Mobile Area Council-BSA
- Seneca Waterways
- Silicon Valley Monterey Bay
- Mt Diablo-Silverado Council
- Monmouth Council, BSA
- Marin Council
- Los Padres Council
- Puerto Rico Council
- Northwest Suburban
- Far East Council
- Jersey Shore Council
- Catalina Council
- Annawon Council
- Cornhusker Council
- Chief Cornplanter Council, BSA
- Stonewall Jackson Council
- Last Frontier Council
- Shenandoah Area Council